



BIOCLIMATIC PERGOLA LUXE PERFIL®

 **LUXEPERFIL®**

## bioclimatic

Bio- and climatic.

1. adj. Bio. Bio. Related to climate and living organisms.
2. adj. In the words of a building or its layout in space: It tries to take advantage of environmental conditions for the benefit of users.

## pergola

1. f. Structure usually consisting of parallel colonnades supporting an open roof of girders and cross rafters.







# LIVE AND ENJOY THE OUTDOORS

With the new **bioclimatic pergola Luxe Perfil** you can create new spaces to live and enjoy outdoors, regardless of year time, protected from the sun, rain and wind.

Just pushing a button you can create your own microclimate by adjusting the amount of light, shade and ventilation desired at any time.

Relax and enjoy outdoor living.



# BIOCLIMATIC PERGOLA LUXE PERFIL

With the new **bioclimatic pergola Luxe Perfil** we respond to the growing trend of trying to enjoy outdoor spaces at any time of the year, in the most comfortable way possible, both in residential areas and in restaurants and hotels.

The new **bioclimatic pergola Luxe Perfil** is distinguished by its innovative patented LED lighting system, which allows to maintain high lux ratios regardless of the position of the slats.

Its studied and elegant design together with its sturdy aluminum structure offers excellent resistance to wind, rain, snow...

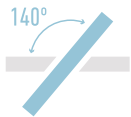
Its large dimensions, different types of assembly together with the high quality of its materials and accessories, make the Luxe Perfil bioclimatic pergola the ideal solution for sun protection and enclosure for both residential and commercial uses in restaurants and terraces.

## FEATURES

Solar protection system of aluminum structure with adjustable slats ceiling, designed to ensure maximum comfort and resistance to outdoor.



Total protection against solar radiation and rain.



Adjustable slats from 0 to 140°



Large dimensions per module:  
Height: 3000 mm  
Width: 4500 mm  
Length: 7500 mm.



Patented high efficiency LED lighting system.  
Perimeter lighting: White and RGB.



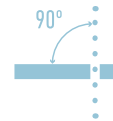
Patented anti-fouling system.



Very efficient rainwater evacuation system.

## ADVANTAGES FOR THE INSTALLER

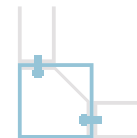
The **bioclimatic pergola Luxe Perfil** is designed so that it can be installed easily and quickly with minimal personnel and very few tools.



Its design allows the installer to make it, since all the profiles are designed for cutting and making at 90°.



Custom design.  
The pergola dimensions can be adjusted to the exact size in mm. (without changing the pitch between slats, using the offset profiles)



Quick and easy structure assembly.  
Only 2 screws are needed to attach each beam to the column.



Quick and easy installation of the slats by clip with patented safety device, without screws.

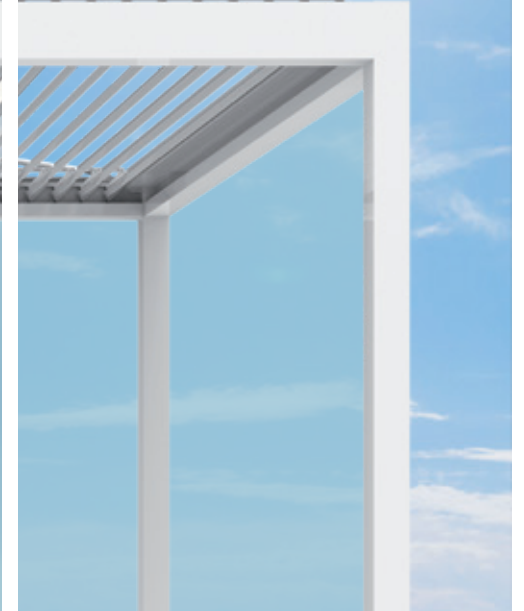
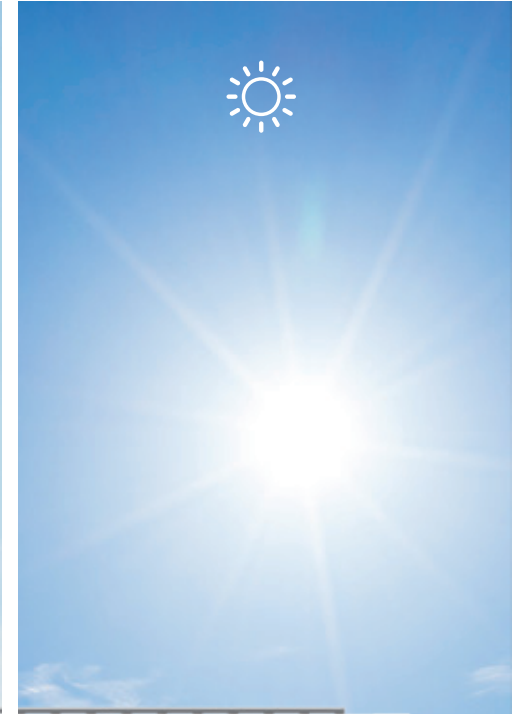
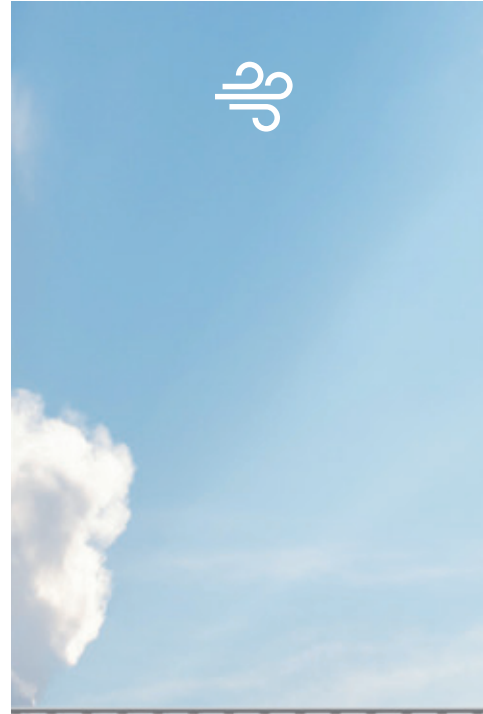
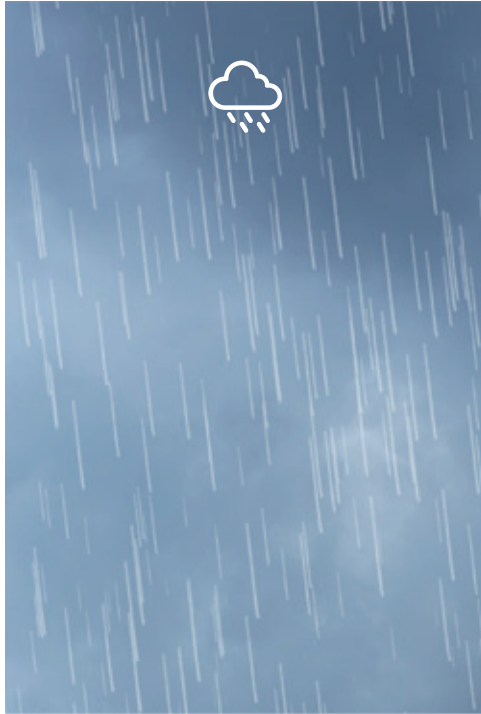


The patented safety system in the beam-slat connection prevents the possible fall of the slats during assembly and during use.



Plug & play connections with IP65, for easy installation.  
Plug and play.





SAFETY, PROTECTION AND COMFORT



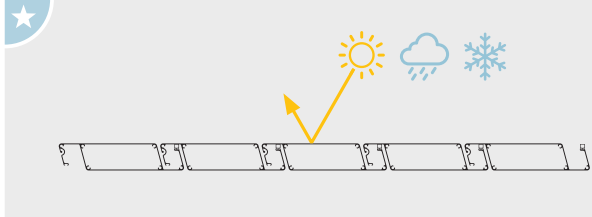
# MAXIMUM CONTROL, MAXIMUM COMFORT

The different degrees of orientation of the slats allow us to control the entry of sunlight, air circulation and protect us from adverse weather conditions such as rain or snow.

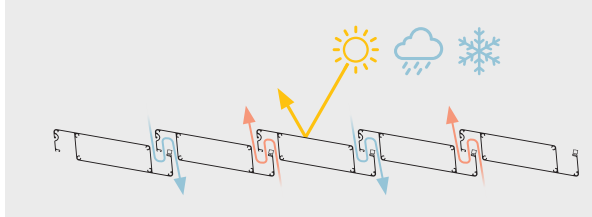
The slats are driven by a user-friendly control or mobile devices.

In addition to the 4 favorite positions ★ (0°, 45°, 90° and 140°) of the pergola, you can vary the orientation of the slats until you get the optimal ventilation and the amount of light, shade and protection you want at every moment of the day. This means significant energy savings by being able to regulate the temperature of the room in a natural way.

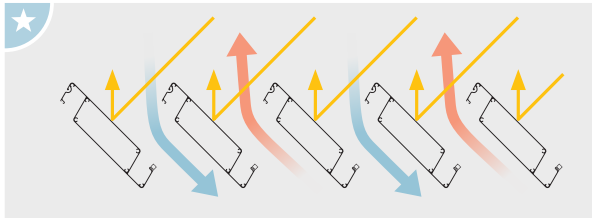
The natural ventilation that is generated by orienting the slats, avoids the "greenhouse effect" that occurs with other systems of sun protection such as awnings, canopies or eaves.



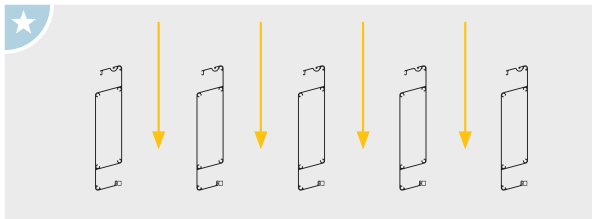
**0°**  
Closed slats provide total protection against solar radiation, rain and snow.



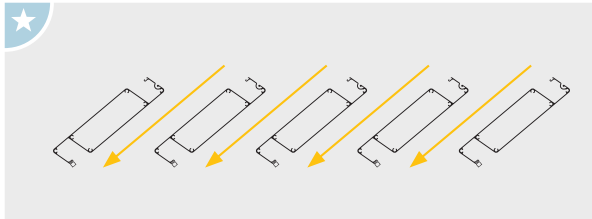
**10°**  
Protects from sun and rain and at the same time allows recirculation of air to ventilate the room.



**45°**  
Enjoy natural ventilation creating a light breeze and protected from the sun's rays.



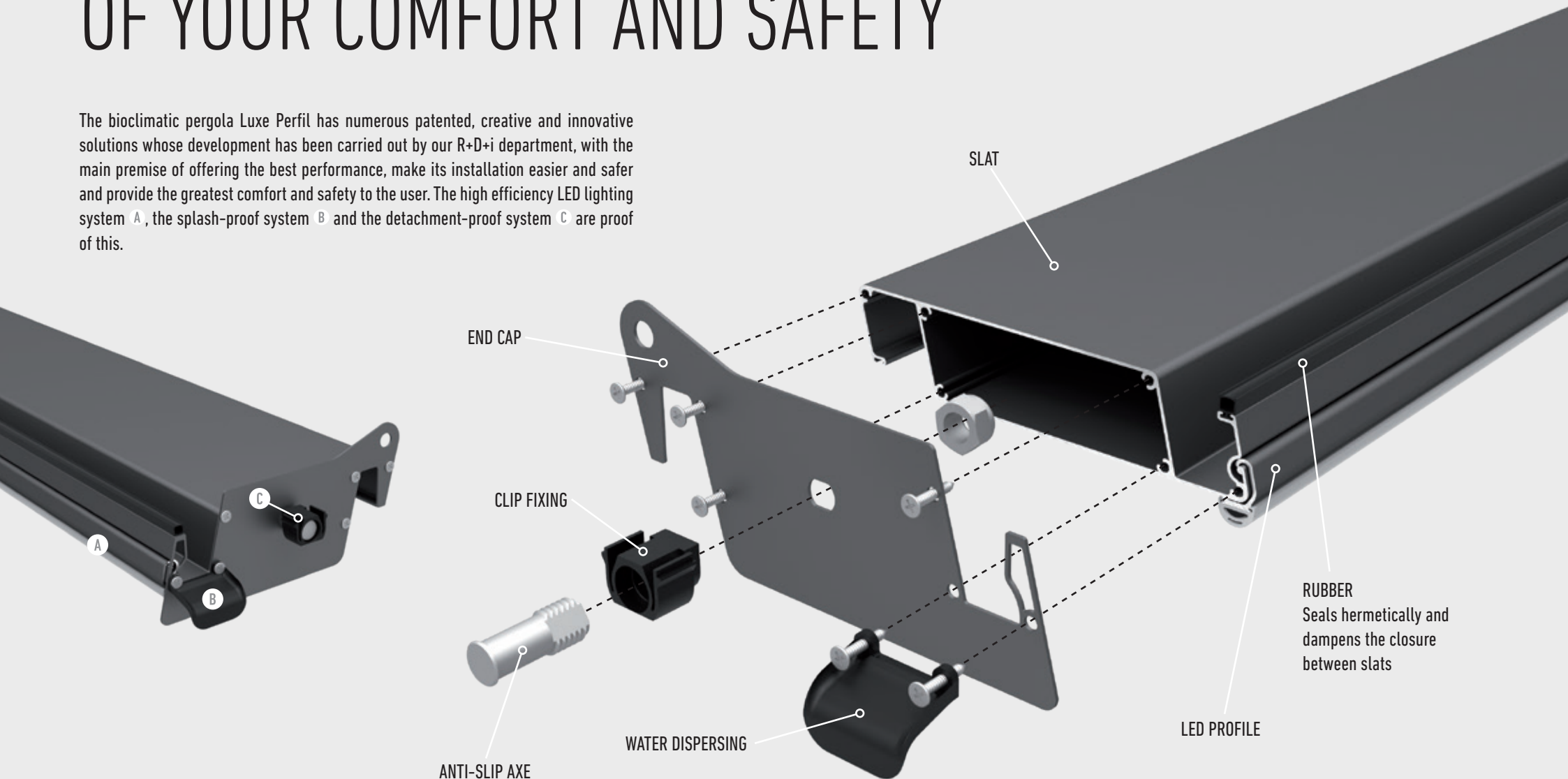
**90°**  
The total opening of the slats allows you to enjoy the sun in winter or on low light days.



**140°**  
The maximum inclination of the slats lets in sunlight even when it is getting dark.

# INNOVATION AT THE SERVICE OF YOUR COMFORT AND SAFETY

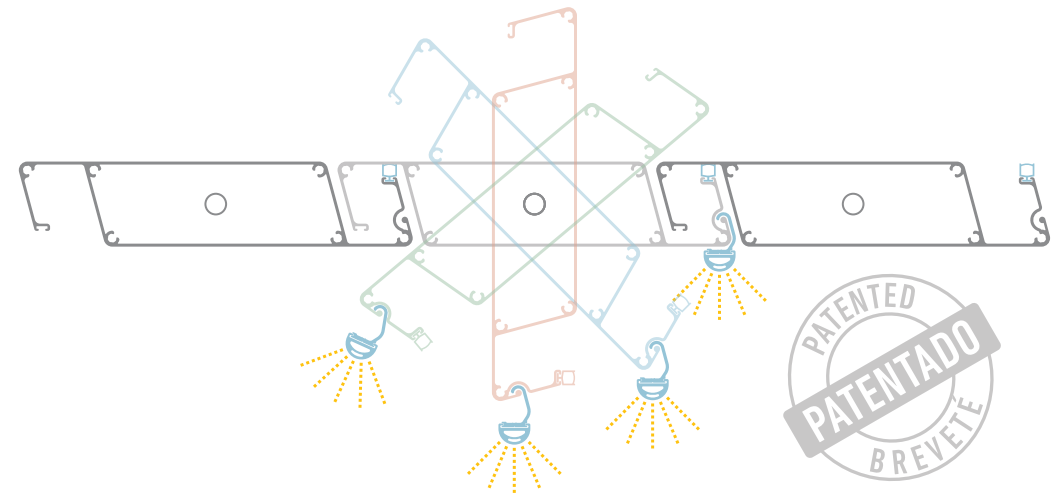
The bioclimatic pergola Luxe Perfil has numerous patented, creative and innovative solutions whose development has been carried out by our R+D+i department, with the main premise of offering the best performance, make its installation easier and safer and provide the greatest comfort and safety to the user. The high efficiency LED lighting system **A**, the splash-proof system **B** and the detachment-proof system **C** are proof of this.



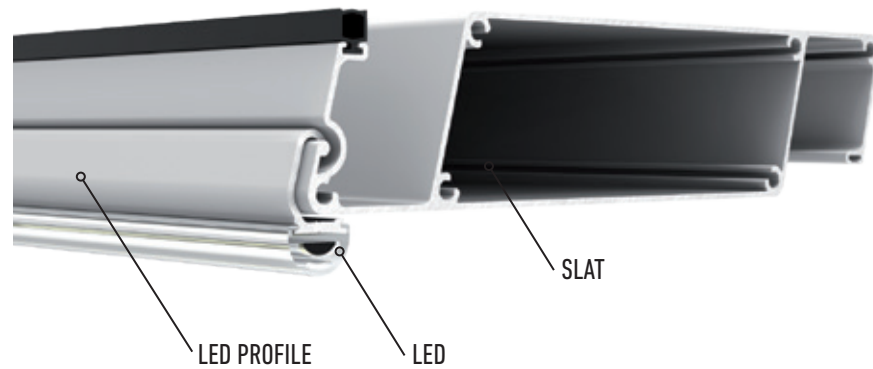
# LED SYSTEM [ENERGY EFFICIENCY]

Most lighting systems, installed on pergola slats currently on the market, offer maximum energy efficiency when the slats are closed. This efficiency is compromised by orienting the slats, since these when rotating on their axis project the light on the adjacent slats so that most of the light flow is lost.

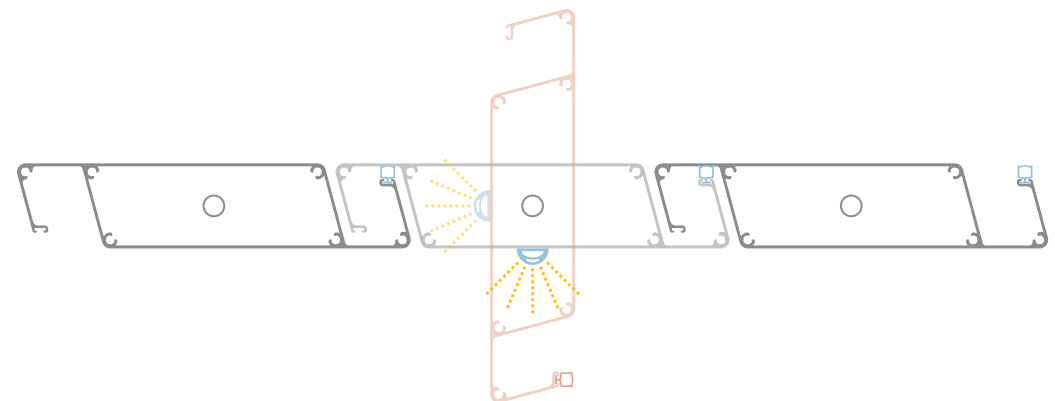
Our patented system allows a constant light flow and always oriented to the same point, which translates into greater comfort and significant energy savings since it is not necessary to oversize lighting equipment or install perimeter lighting.



Our patented system allows the light flow to always be oriented in the same position.



0° | 45° | 90° | 140°

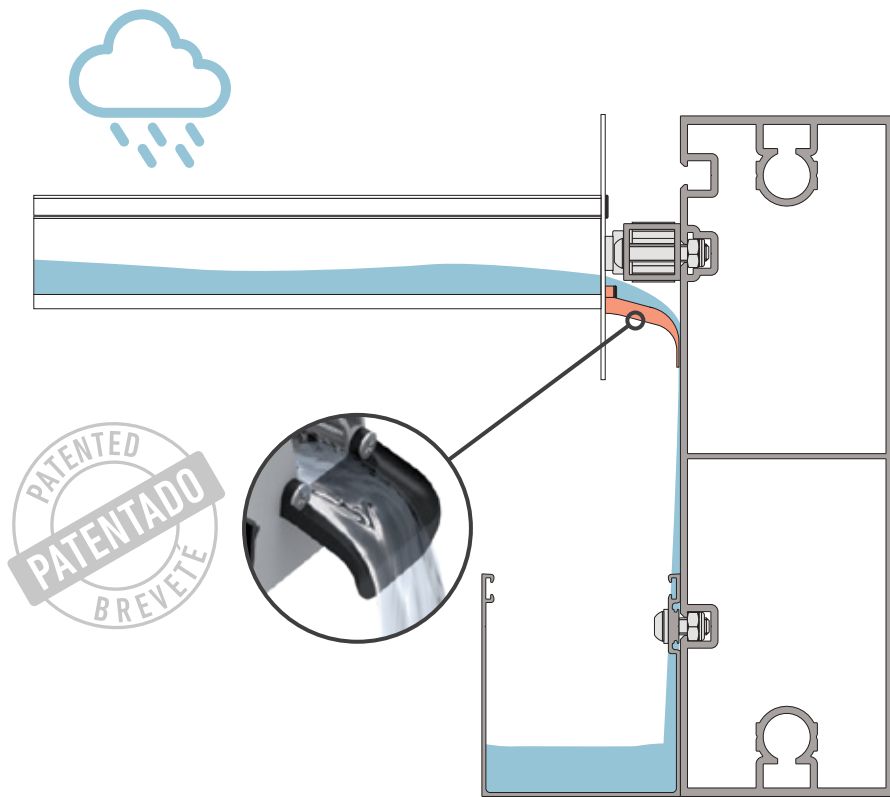


Other systems.

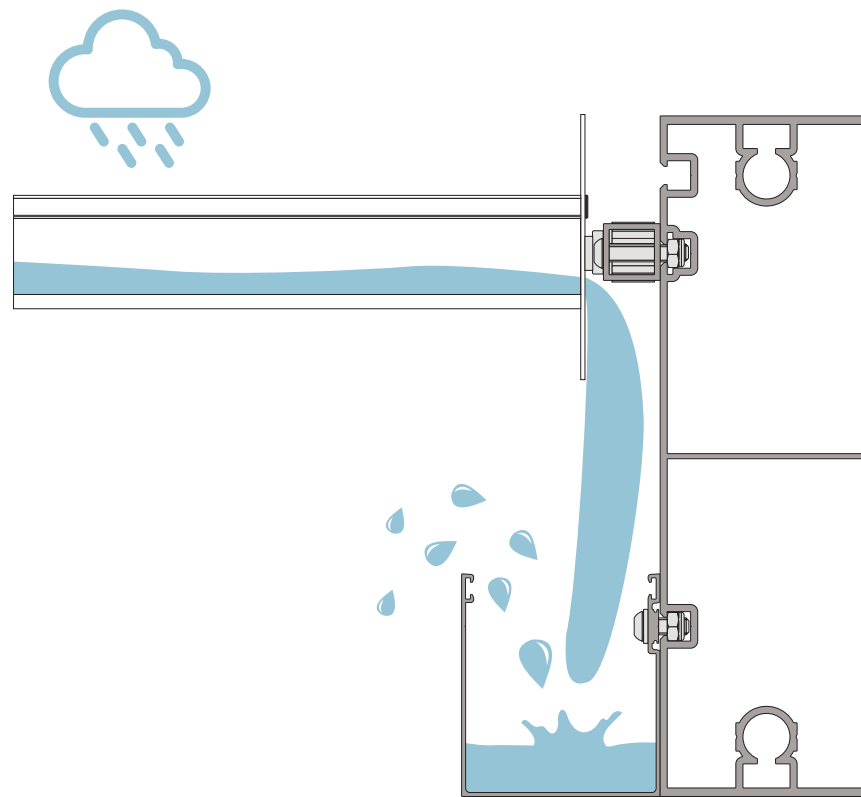
# ANTI-SPLASH SYSTEM [COMFORT]

Avoiding the annoying splashes of water produced by heavy rain is possible thanks to our patented anti splash system.

The dispensor guides the water to the wall of the beam where it disperses in small drops that flow slowly to the gutter avoiding splashes.



Luxe Perfil anti-splas system.



Other systems.



The bioclimatic pergola Luxe Perfil has a very efficient system of drainage and evacuation of rainwater.

The slats design collects the water from the rain and directs it (without slope) towards the high capacity gutters where it will flow to the evacuation columns.

The water can be evacuated through the column through the hole intended for this purpose or channeled by slab, thus allowing its reuse.

When it stops raining and you want to turn the slats again, you do not have to worry because the design of the slat will make the water that may have been stuck in the ceiling, flow into the gutter.



Free drainage by column.

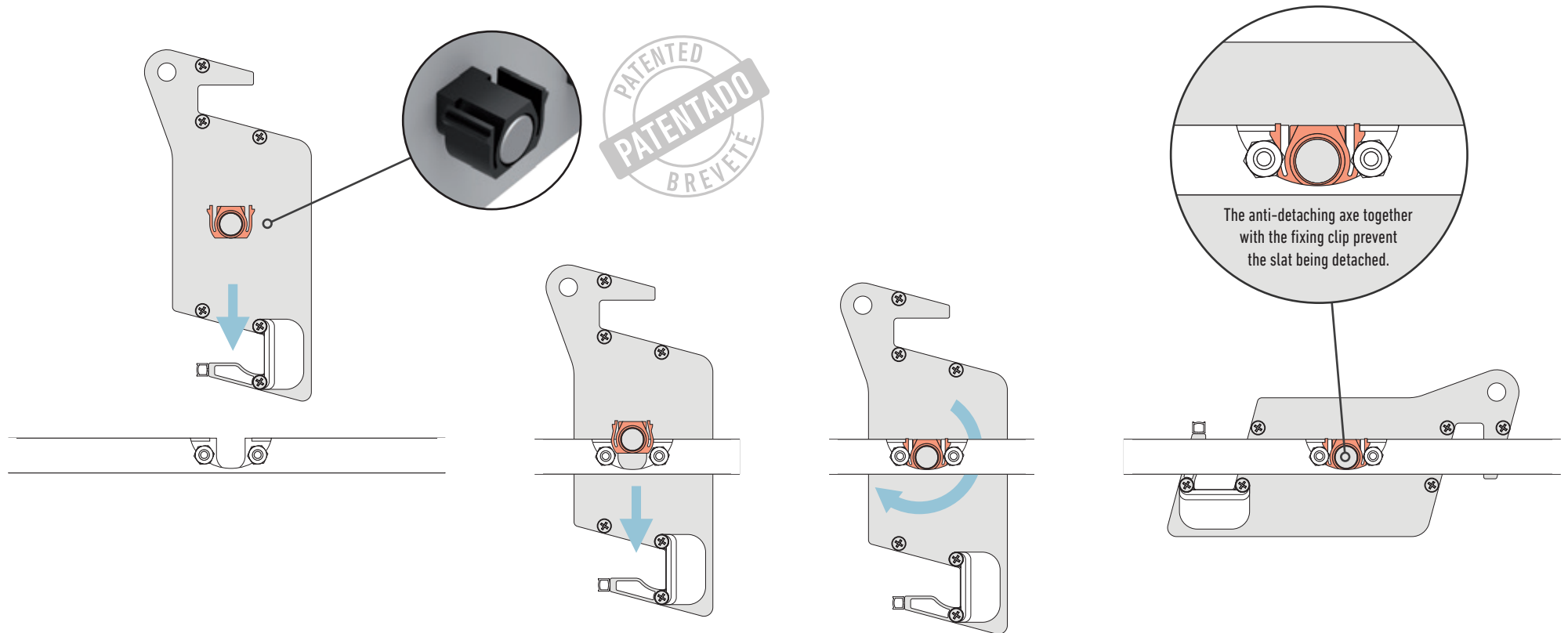


Slab channel drainage.

# ANTI-DETACHING SYSTEM [SAFETY]

Safety in both assembly and use has been one of the biggest obsessions of our R&D department when designing the bioclimatic pergola. The fixing clip together with the anti-detaching axe facilitate the mounting of the slats, while once fixed to the beam, prevent the slat detach and at the same time provides structural rigidity to the whole pergola.

The **bioclimatic pergola Luxe Perfil** is synonymous with strength and maximum safety. Our tests confirm that a 4-column pergola of 7500 mm x 4500 mm x 3000 mm in height is capable of withstanding 4725 Kg.





Enjoy outdoors with family and friends protected from the sun with maximum security.



# CREATING NEW OPPORTUNITIES FOR YOUR BUSINESS



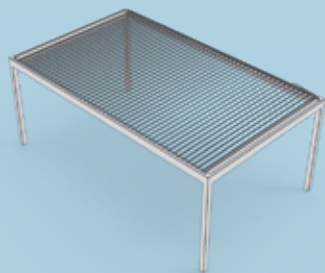
The elegant, minimalist and timeless design of the Bioclimatic Pergola Luxe Profile integrates perfectly with all architectural styles, so you can transform a simple terrace into a unique space where you can offer your customers new experiences and greater comfort with the security of being protected from the sun and inclement weather at any time of the year.

Investing in a **bioclimatic pergola Luxe Perfil** means increasing the added value of your business that your customers will surely appreciate.

Hotels, restaurants and coffee shops see in our bioclimatic pergola the best system of enclosure and sun protection for your business.

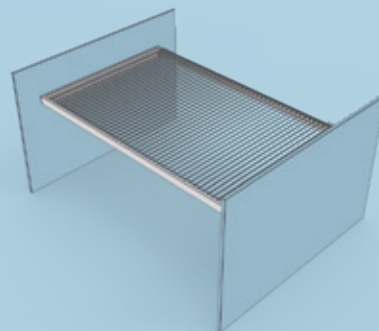


# MOUNTING TYPOLOGIES



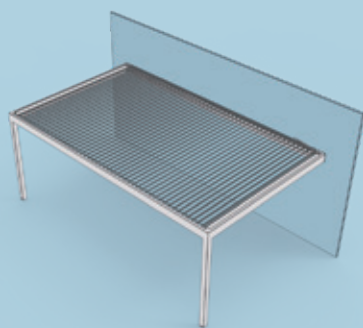
## 4 COLUMNS

The pergola is fixed to the floor by the columns.



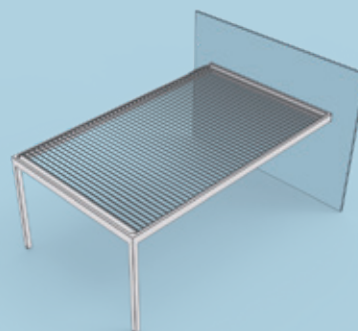
## WITHOUT COLUMNS

The pergola is fixed to the walls.



## 2 COLUMNS

(Perpendicular slats)



## 2 COLUMNS

(Parallel slats)

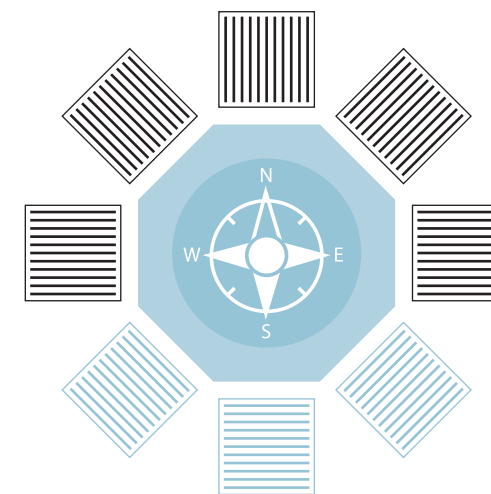
Combination of wall and floor fixation by columns.



## PARALLEL OR PERPENDICULAR SLATS?

In a south-facing terrace it is advisable that the slats of the pergola are parallel to the facade. In this way we can better regulate the partial or total light input.

On a terrace facing north, it is preferable to place the slats perpendicular to the facade. This will allow us to optimize the light input from both the east and west.

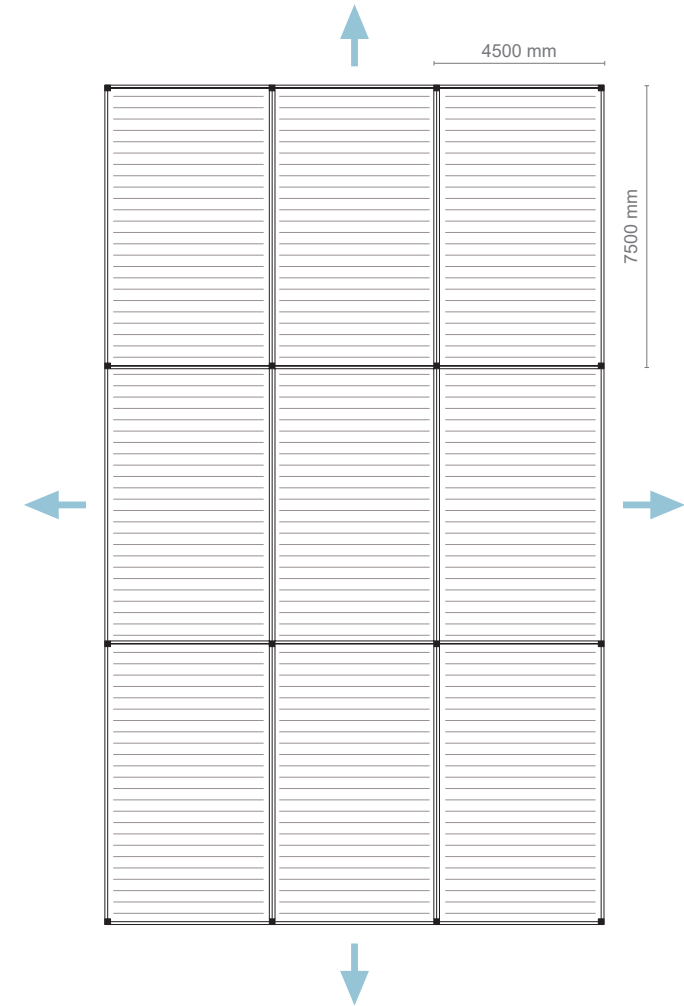
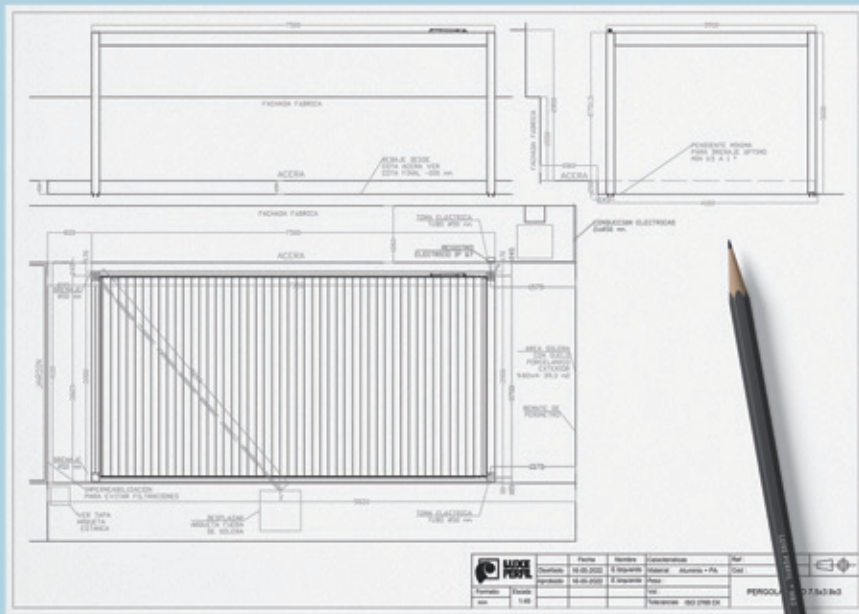


# | SOLUTIONS FOR YOUR PROJECT

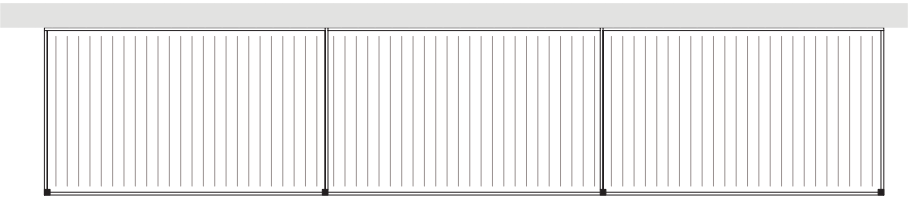
Each terrace, garden, restaurant, etc. has its own characteristics that make each installation unique, so the bioclimatic pergola Luxe Perfil adapts to any space to give solution to the needs of each project.

Its studied design with modular system, allows to join several structures without duplicating the central pillar, to improve the aesthetics of the set and save costs.

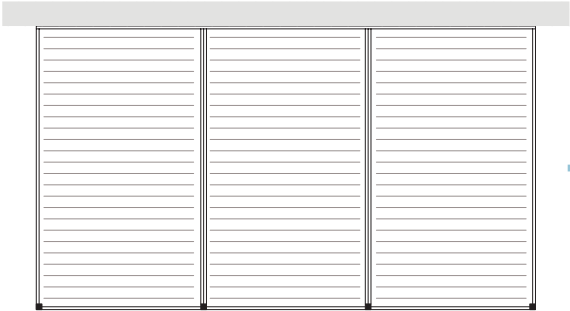
Our R&D department is at your disposal to analyze their needs and advise you to achieve the most efficient, safe and economical solution.



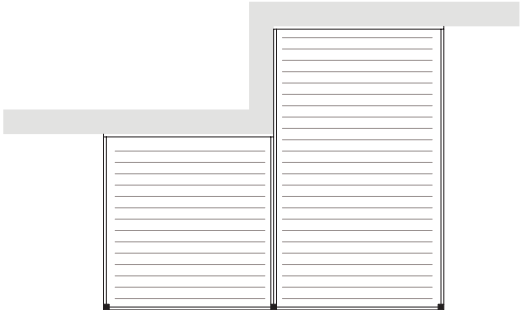
SHARED CENTRAL COLUMNS  
WITHOUT THE NEED TO DUPLICATE BEAMS ON SHORT SIDES



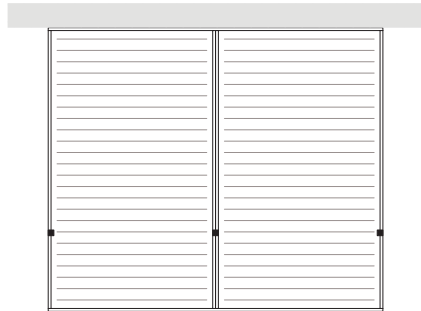
SHARED COLUMNS WITHOUT THE NEED TO DUPLICATE BEAMS ON SHORT SIDE



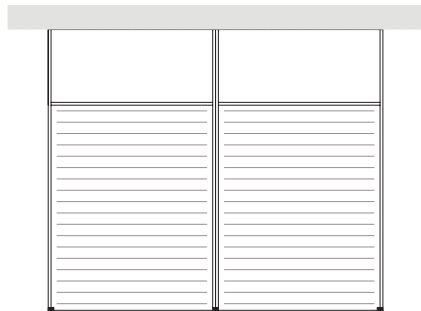
SHARED COLUMNS



DIFFERENT SIZES WITH SHARED COLUMNS

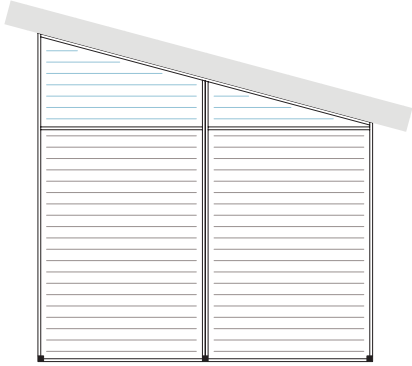


OFFSET COLUMNS



OFFSET BEAMS

MAXIMUM FLEXIBILITY  
THE PERGOLA ADAPTS TO YOUR ENVIRONMENT



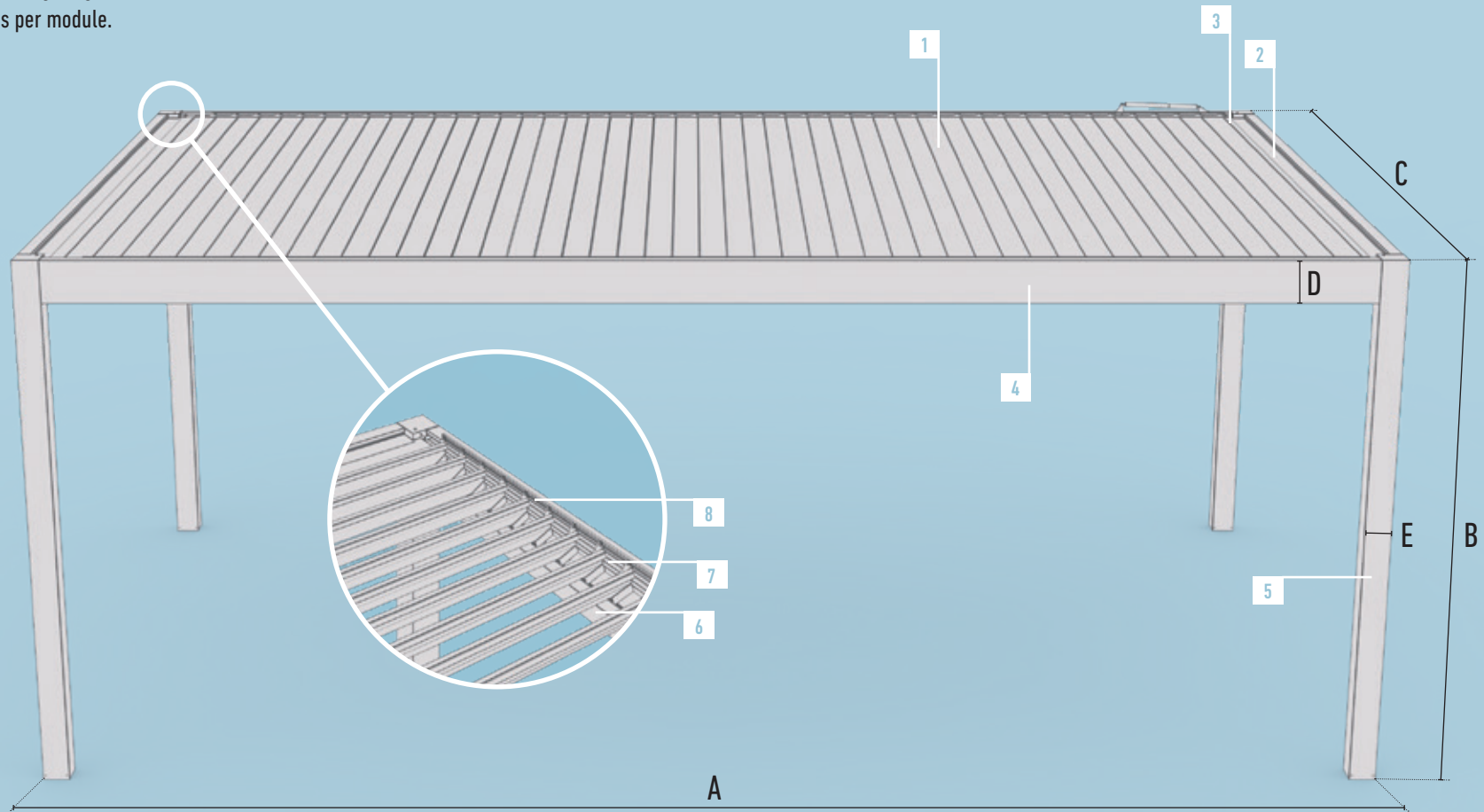
COMBINATION OF MOBILE SLATS + FIXED SLATS



OFFSET BEAMS AND COLUMNS

# DIMENSIONS

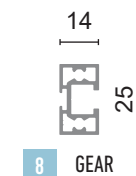
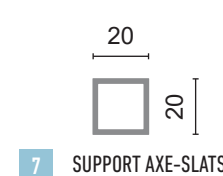
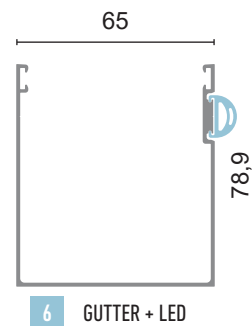
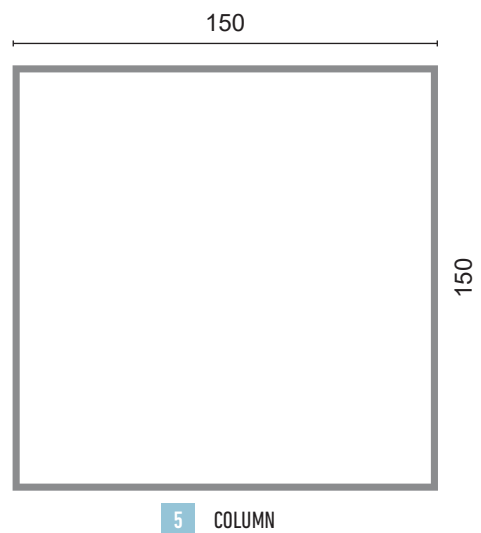
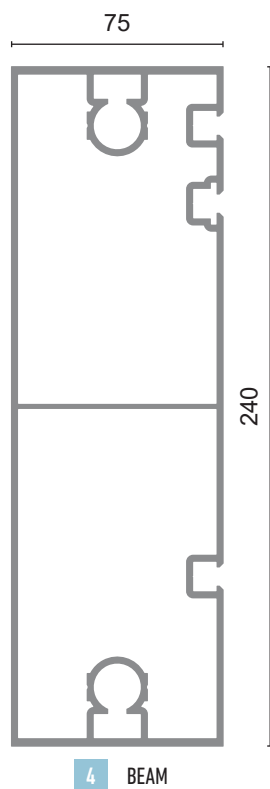
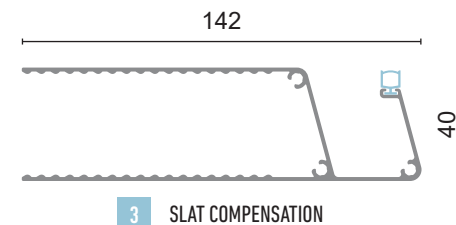
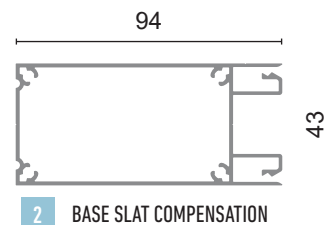
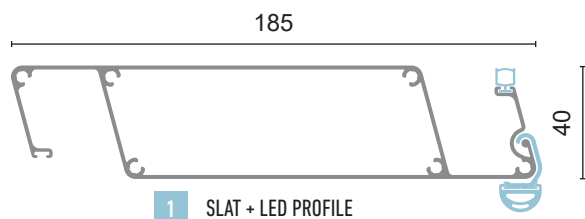
Its studied and elegant design together with its robust aluminum structure allows large dimensions per module.



A	B	C	D	E
MAXIMUM LENGTH TESTED	MAXIMUM HEIGHT TESTED	MAXIMUM WIDTH TESTED	BEAM	COLUMN
7500 mm	3000 mm	4500 mm	240 mm	150 x 150 mm



# PROFILES



## TESTS AND CERTIFICATES

The purpose of our pergola is to provide you with maximum comfort and safety. In order to guarantee this, we have subjected it to various tests\* that certify its resistance and efficiency in the most adverse climatic conditions.



### WIND RESISTANCE

UNE-EN 13659

Above class 6  
(1373 Pa ≈170 km/h)



### WATER TIGHTNESS

UNE-EN 12056-3

110 l/m<sup>2</sup>  
(Constant rain)



### SNOW RESISTANCE

UNE-EN 13561

140 Kg/m<sup>2</sup>  
4725 Kg \*

\* Tests performed on a 4-column pergola of 7500 mm x 4500 mm and 3000 mm height.

All our processes and products are subject to the strictest quality controls, as certified by the **ISO 9001 certificate**.

## MATERIALS

In order to guarantee the correct operation, great durability and an impeccable finish of our bioclimatic pergola, we use AW-6063 T5 aluminum components, 304 stainless steel, UV resistant polyamide and EPDM, all of the highest quality.

## WARRANTY



Aluminum structural elements.



Colorimetry.



Electronics and motorization.



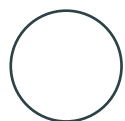
Accessories (Led, heater, sensors...)

Parts that have been manipulated, altered or subjected to improper treatment or use will be excluded from the warranty.

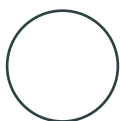
# FINISHES

Your pergola as you imagine it. You can choose from any of the more than 200 colors of the RAL menu, our exclusive simil wood and anodized finishes.

## FINISHED IN STOCK (SHORTEST MANUFACTURING TIME)



WHITE



WHITE - RAL 9016  
TEXTURED



RAL 7016  
TEXTURED



RAL 7022  
TEXTURED



RAL 8014  
TEXTURED

## STANDARD



RAL 1013 TEXTURED



RAL 6009  
TEXTURED



RAL 7035  
TEXTURED



RAL 8017  
TEXTURED



BLACK - RAL 9005  
TEXTURED



GRIS 2150 SABLÉ  
TEXTURED

Our lacquering process meets the requirements of the European Qualicoat and Qualideco certification to ensure the highest quality of our finishes.



The pergola can be mono color or combine 2 different colors, one for the structure and one for the slats.



To achieve a feeling of greater amplitude in a bicolour pergola, the color of the slats must be lighter than that the structure. If the slats are darker the feeling of a lower ceiling is created.









# SAFETY PROTECTION AND COMFORT





# | ACCESSORIES

Extras that make a difference and allow you to expand the possibilities of your pergola. More safety, more protection and more comfort.

## LED LIGHTING

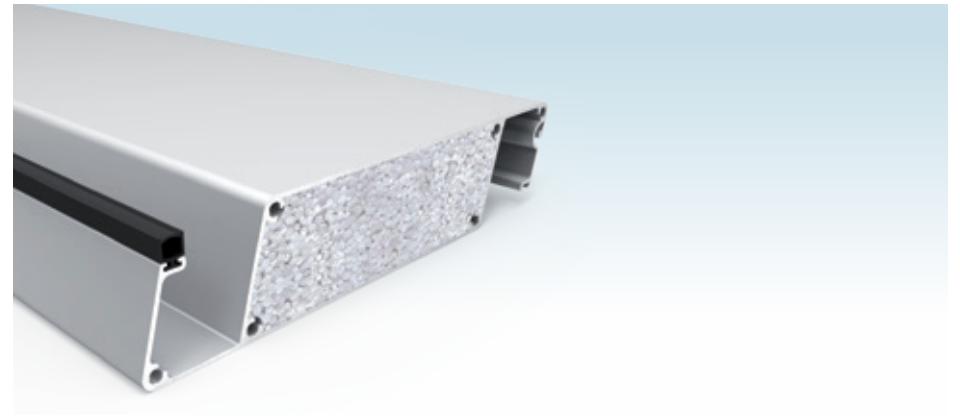


When night comes you can continue to enjoy your pergola with the best and most efficient LED lighting.

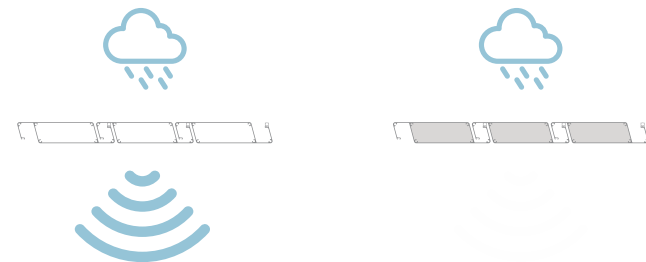
In addition to the installation of our patented system on the slats, RGB LED lighting can also be installed perimetrically on the pergola structure to create different environments.

LED lighting allows the intensity of the light to be regulated and evenly distributed.

## INSULATION SLATS



The expanded polystyrene in the slats increases the insulating properties and considerably attenuates the noise produced by the rain.



## SOUND SYSTEM



Music is one of those little pleasures of life that brings us well-being.

To enjoy it in our pergola we have a high quality sound system with integrated speakers that allows us to listen to music or radio with bluetooth connection to the smartphone or tablet.

## HEATING




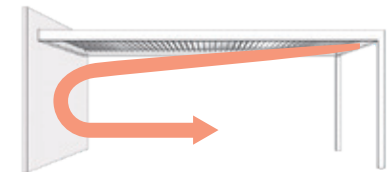
For the cooler nights, nothing beats the comfortable and efficient radiant heat of the Platinum Smart-Heat™ heaters Electric Marine.

Radiant heat works like heat radiated by the sun. Instead of heating the air around you, it warms people and objects. This makes radiant heat a more effective outdoor heat source, as it is less affected by the wind.

Made of high quality AISI316 stainless steel, they have been specifically designed to offer superior resistance to corrosive elements of coastal and marine environments, being the only outdoor heaters on the market fully certified by Lloyds Register.

Available in black and white.

 In the case of installing a single heater, the ideal is to do it on the opposite side of a wall, so that the emitted heat is reflected.



# | ACCESSORIES

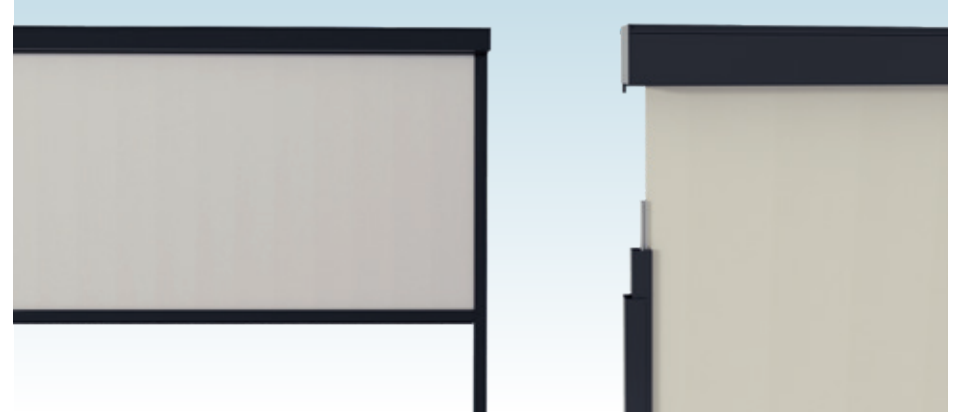
## GLASS CURTAIN



Glazed enclosure system so that in colder and windy climates, especially in winter, you can continue to enjoy your terrace and restaurants can offer your customers a more comfortable experience.

The glass curtain system can be foldable or sliding, to give the best solution to any type of space.

## SCREEN ZIP



They are installed discreetly in the structure of the pergola to provide you with total protection and greater privacy.

The Screen ZIP system allows always tensioned large screens and greater wind resistance.

Available in 3 fabric options: screen, black out and mosquito net.

## SENSORS



Wind, rain, snow... thanks to these sensors the pergola adapts to adverse weather conditions by orienting the blades automatically.

Sensors make your life easier and safer, for example, if the rain sensor (installed as standard in all our pergolas) detects that it starts to rain, the slats will close automatically to prevent water from entering the interior.

The bioclimatic pergola Luxe Perfil has a rain sensor as standard equipment.

## HOME AUTOMATION



Comfortable control your pergola and its accessories from your smartphone or tablet through an intuitive and functional interface.

Create scenarios in a simple way. In a stage you can combine and memorize the slats position of the, sound, lighting...

Compatible with iOS and Android devices.

# PRODUCT DATA

TECHNICAL CHARACTERISTICS	
CUSTOM MADE PERGOLA	√
MAXIMUM MEASURES MODULE	7500 x 4500 x 3000 mm
MEASURE COLUMNS	150 x 150 mm
HEIGHT BEAM	240 mm
MAXIMUM HEIGHT WITH OPEN SLATS	3100 mm
MAXIMUM HEIGHT OF STEP	2760 mm
MEASURE SECTION SLATS	185 x 40 mm
ANGLE ROTATION	0° / 140°
SLATS SEALED	√
SLATS INSULATION	•
MODULARITY	√
REMOTE CONTROL	RADIO 6 CHANNELS - 42 FUNCTIONS
TYPLOGIES	4 COLUMNS 2 COLUMNS PARALLEL SLATS 2 COLUMNS PERPENDICULAR SLATS WITHOUT COLUMNS
INTEGRATED DRAINAGE	FREE OR SLAB CHANNEL DRAINAGE
OPERATING TEMPERATURE	-20°C / 65°C
CONNECTIONS	IP65 - PLUG AND PLAY
PROTECTION LEVELS	MOTOR IP67, CONEXIONS IP65, CONTROLS IP54-55
COLOUR TEMPERATURE LIGHTS	WHITE LED 3200K
POWER LEDS	WHITE 8 W - RGB 7,5 W

ACCESSORIES	
RAIN SENSOR	√
LIGHTING LED SLATS	•
PERIMETER LIGHTING LED	•
SCREEN ZIP	•
GLASS CURTAIN	•
INTEGRATED SOUND EQUIPMENT	•
WIND SENSOR	•
RAIN AND SNOW SENSOR	•
SUN AND WIND SENSOR	•
LIGHT SENSOR	•
HOME AUTOMATION (DAISY)	•
RADIANT HEAT HEATER	•

√	STANDARD (INCLUDED)
•	OPTIONAL



## MATERIALS

STRUCTURE AND SLATS	ALUMINIUM AW-6063 T5
IRONWORKS	STAINLESS STEEL HARDWARE AISI 303-304 ALUMINIUM UV-RESISTANT POLYAMIDE EPDM
SCREWS	STAINLESS STEEL A2

## FINISHES

FINISHES IN STOCK (SHORTEST MANUFACTURING TIME)	WHITE, WHITE RAL 9016 TX, RAL 7016 TX, RAL 7022 TX, RAL 8014 TX
STANDARD FINISHES	RAL 1013 TX, RAL 6009 TX, RAL 7035 TX, RAL 8017 TX, BLACK RAL 9005 TX, GRIS 2150 SABLÉ TX
UPON REQUEST	RAL CARD SIMIL WOOD ANODIZED
CERTIFICATIONS	QUALICOAT QUALIDECO

## TEST / CERTIFICATIONS

WIND RESISTANCE (UNE-EN 13659)	Above class 6 1373 Pa ≈170 km/h
WATER TIGHTNESS (UNE-EN 12056-3)	110 l/m <sup>2</sup> (Constant rain)
SNOW RESISTANCE (UNE-EN 13561)	140 Kg/m <sup>2</sup> 4725 Kg *

## PATENTS

HIGH EFFICIENCY LED LIGHTING SYSTEM SPLASH-PROOF SYSTEM DETACHMENT-PROOF SYSTEM
---

## WARRANTY

ALUMINUM STRUCTURAL ELEMENTS.	10 YEARS
COLORIMETRY	5 YEARS
ELECTRONICS AND MOTORIZATION	3 YEARS
ACCESSORIES (LED, HEATER, SENSORS...)	3 YEARS

Parts that have been manipulated, altered or subjected to improper treatment or use will be excluded from the warranty.

\* Tests performed on a 4-column pergola of 7500 mm x 4500 mm and 3000 mm height.



Pol. Ind. La Pahilla · C/ Alhóndiga, 2  
46370 · Chiva · Valencia · España  
(+34) 96 252 20 80  
luxeperfil.es · info@luxeperfil.es